



April 17th 2020

ROXBY LANDFILL SITE UPDATE

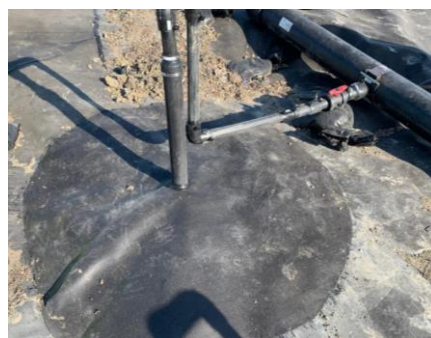
Dear Local Residents

As Site Manager I would like to take this opportunity to provide a progress update.

The next phase of works will consist of closing down the crest of the Landfill Site with a further 35,000m² of LLDPE plastic liner. To date we have installed circa 20,000m² and waste inputs have started to be diverted into the new operational area called Cell 12. Therefore minimising activity on the crest of the Landfill.

The forecast for the weekend and next week looks dry across the UK. We can assure the residents that the remaining capping will be installed as soon as it is possible to do so and we hope to continue to progress over the weekend.

This week we have installed a further 3 deep gas wells and installed scavenger lines in the operational area near the Northern Flank making this a total of 14 deep wells and this programme of works is now complete. The deep wells allow the gas extraction system to target the lower levels within the waste mass, therefore increasing the overall extraction of landfill gas and the sustainable generation of electricity for the National Grid.



As you are aware Biffa has an open door policy; however, due to Government advice on COVID 19 we are unable to offer a site visit during this time as we are required to limit social interaction. If you wish to discuss the weekly update further please don't hesitate to contact us by email: - roxbylandfill@biffa.co.uk or weighbridge on 01724 733336.

We will continue to liaise with the Environment Agency, local councillors and the local MP to ensure all parties are aware of progress and will provide weekly updates to the liaison group.

Regards

James Harrison
Site Manager